

nima quarterly forum, Q2 2025

22 May 2025, 2pm – 3pm GMT

Welcome / housekeeping



- One hour max briefing with Q&A after each item
- Forum is being recorded
- Slides will be shared after the meeting
- Please ask questions via Q&A button
- Please raise 'any other business' in chat

Forum agenda



1. Message from Anne Kemp
2. Nima's IM community / campaigns
3. Information Management Initiative (IMI) Update
4. Nima Vice Chairs
5. nima communications and events
6. bSUKI update
7. AOB

Someone is missing...



...message from Anne Kemp



Land's End to John O'Groats (LEJOG)

Anne Kemp is backpacking 1220 miles over 100 days.

For Alzheimer's Society in memory of her mother who died in July 2024.

If you would like to donate, please use the QR code below or search for 'Just Giving Anne Kemp'

Anne
Kemp's
JustGiving
Page



Nima is now a membership organisation



With trusted quality data, we make great things happen.

What we do

Nima promotes information management best practices, aiming to support digital transformation across the built and managed environment. In the UK and internationally, we help people tackle practical challenges relating to the creation, use, management and exploitation of information and data about buildings, infrastructure and the natural world.

[Find out more...](#)



With trusted quality data, we make great things happen.

The Information Management Initiative (IMI)



Information
Management
Initiative

Led by the Construction Leadership Council (CLC) and supported by nima, the **Information Management Initiative (IMI)** aims to help organisations to progressively transform their information and data management practices across the built and natural environment.

[Find out more...](#)

Become a nima member



Join nima. Help us to improve information management practices across the built and managed environment.

Through individual nima membership, you will be making an important commitment to improving information management in organisations and projects across the built and natural environment. You will be signing up to our core principles (reflecting those in the [Information Management Initiative](#)) which include:

- **Recognise the whole life purpose of information and data:** Identify the relevance and purposes of data and information to improve organisational and project outcomes. Consider an asset as both the physical structure and the data and information held to manage it.
- **Upskill people in information management:** Establish basic digital literacy as an organisational minimum requirement, make relevant data and information management skills part of individuals' continual professional development, and recognise and empower 'IM leadership'.
- **Take a common, consistent and data-centric approach:** Converge on a common framework to define, procure, deliver, store and use interoperable data and information, and incorporate a data and information architecture relevant to the organisation and its collaborators.
- **Establish clear data and information governance principles:** Adopt clear approaches on stewardship, ethics, quality, security, interoperability, longevity, openness and integrity of data and information. Enable sharing and easy use of the right data and information at the right time and in the right structure by considering data and information independently from technology.

Become a nima member

For **just £35/year**, standard membership benefits include:

- **recognition as a nima supporter**, via a unique nima membership badge¹ (shareable in your email signature, LinkedIn profile, etc) denoting your commitment to improving information management²
- **polling members' opinions on industry policy issues** – opportunities to influence nima policy initiatives via member-only consultation polls
- **exclusive events** – invitations to two member-only online events a year where you will be consulted on topical issues relating to information management (for example, nima's position on government policy, responses to government green and white white papers, the IMI Framework, development of guidance, etc)
- **members-only online discussion forums** to reflect member opinions (coming soon – late 2025)
- **opportunities to influence nima event content** – help shape nima's virtual conferences, webinars and other events
- **nima monthly newsletter** – new members will be added as subscribers to the existing nima newsletter,³ but will be able to unsubscribe



We aspire to develop our membership offering over the coming years with a view to potentially becoming a chartered membership body representing information management practitioners in the built and managed environment. Depending upon members' needs (we will be polling members' opinions), activities may include developing a body of knowledge, a code of conduct, continual professional development (CPD) activities, certification, measurement of IM capabilities, etc.

Campaigns



1. Become a member
2. Join the forum to discuss potential campaigns

Watch out for further updates

Go on, it's very easy...



... because nima needs your help!

membership - Q&A





Information Management Initiative



Construction
Leadership
Council



- Industry-led government-supported programme to progressively transform IM practices across the built and managed environment
- Launched at virtual conference on 7 November 2024
- Promoted through web, PR and events programme
- Ongoing process to onboard sponsors and signatories
- Big push at DCW 2025



Information Management Initiative



Sponsors Supporters Signatories



The Everything Experts.





Information Management Initiative



Construction Leadership Council

December 2023

Autumn 2024

Today

June 2030

Phase 1

Phases 2-4

Industrywide Stakeholder Engagement

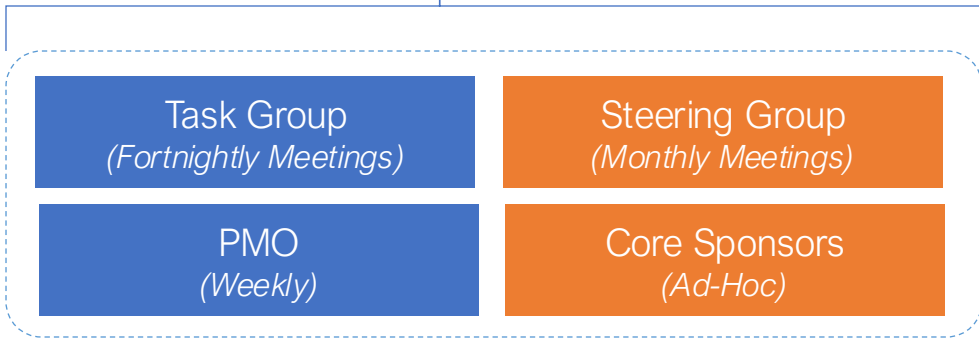
Approach Development

High-level Implementation Plan

Launch Comms. Campaign

Phase 1 Development Team

High-level plan to be developed



Shift in focus to extend consultations beyond the 'early adopters' and digital leads to wider communities in the built environment to increase awareness



Current work

1. Refreshing the task group – chance for signatories
2. Continue engagement with sponsors, supporters and signatories
3. Maintain PR/events push
4. Transition from UK BIM Framework to IMI Framework
5. Detailing scope of IMI ‘projects’

2, 3 & 4 focus: Digital Construction Week (**4-5 June 2025**)



Information Management Initiative

IMI Projects



Insurance Sector
'Data Driven discounts'
Smart Data, Smarter
Insurance'



Standard
Information
Approach



National
Reference
Data Library



Information
Management
Platform



'Why' sign-up
to the IMI



Upskilling &
Education
'Learn and Earn'



Route Map



Maturity & Benefits
Framework
'Know your score and
grow your value'



Case Studies

info@wearenima.im

IMI - Q&A



Information
Management
Initiative

Current Vice Chairs

- Fiona Moore – Programme, finance +
- Paul Wilkinson – Comms, Events +
- Simon Lewis – Governance
- Emma Hooper – Projects & bSUKI
- Sam Hardy – Operations
- Rachel Heaton - Patrons

Vice Chairs Vacancies

Vacancies being filled:

- Education and Upskilling
- Volunteers
- Without portfolio

Vacancy still to be filled:

- Stakeholders, communities & change management

nima comms - 1



Communications and events

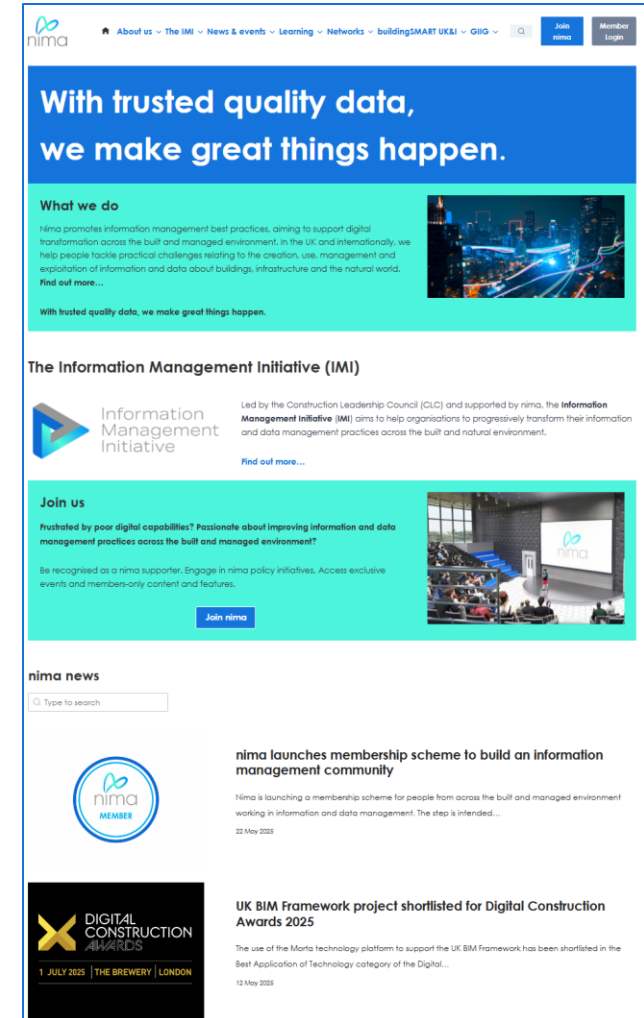
- websites
- newsletter
- social media
- events

nima comms - 2



Websites

- External critique of wearenima.im
- Ongoing actions to: improve look and feel, highlight 'calls to action', optimise page loading and search engine performance, create responsive mobile site, etc
- ukbimframework.org will become imiframework.org on 30 May 2025



nima comms - 3




nima newsletter ([sign up](#))

- Continually refined since re-introduction in late 2024
- Regular monthly publication
- Above-average open and click-through
- Opportunity for members, patrons, networks to share news, case studies, etc – eg:

IM4Power

[View this email in your browser](#)




Welcome to *Impulse*, our regular summary of nima news and upcoming events.

nima/CLC-backed IMI maintains momentum

Interest in, and discussion about, the Construction Leadership Council and nima-backed **Information Management Initiative (IMI)** has continued into early 2025. The sector-wide change management programme will be the main topic covered in nima's first online quarterly forum on 27 February (details below). Nima will also be spreading the IMI message at forthcoming events including at FutureBuild in London on 5 March. And further engagement with the early **Founding Sponsors** and **Signatories** is also set to start in March.

If you have any colleagues who might want to know about the IMI, please forward this e-newsletter to them, and suggest they [subscribe](#) to get future updates.

nima news



Our first nima quarterly forum is at 2pm GMT this Thursday, 27 February 2025. The online forums are open to anyone interested in our work. [Register for Thursday](#); save the other 2025 dates: 22 May, 4 September and 4 December.

Standardised data and structured information management are vital for long-term asset maintenance. Two recent reports have criticised standards of record keeping and information management.

nima comms - 4



social media

- main current focus via [LinkedIn](#)
 - More frequent and sustained posting of content
 - c. **10.3k** WeAreNima.im followers (up **6.5%** YoY)
 - c. **5.9k** UK BIM Framework followers – up **17.8%** since January (AI video campaign)
- plan 2025 Q2 push to revamp YouTube presence; may resurrect podcasts
- Any volunteers?

Inspiring. Influencing. Connecting. Supporting. Transforming.

nima

WeAreNima.im
Inspiring. Influencing. Connecting. Supporting. Transforming.
Construction · London, County (optional) · 10K followers · 2-10 employees

James & 13 other connections work here

Message Following

Home About Posts Jobs People

Overview

Nima - Inspiring. Influencing. Connecting. Supporting. Transforming. Our ultimate vision is a thriving and sustainable built and natural environment transformed by exploiting purpose-driven data. As trusted advisors, we facilitate the implementation and integration of practical information management ... see more

Show all details →

Page posts

WeAreNima.im 10,237 followers · 2d ·

Two recent UK news items highlight how better data and information management practices can help deliver better whole life outcomes.

Standardised data and structured information...
WeAreNima.im
16 · 2 reposts

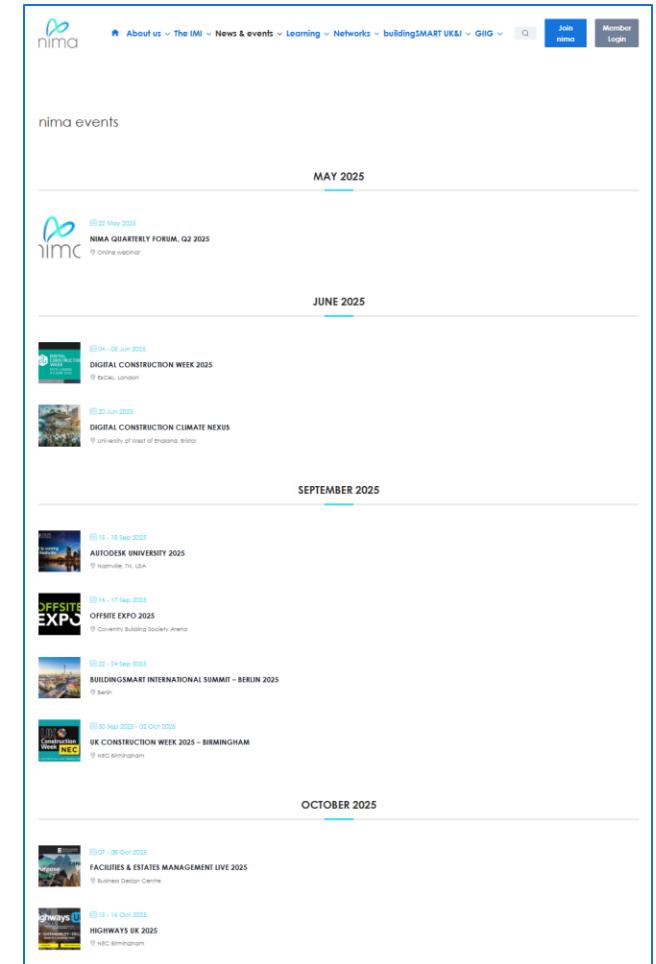
WeAreNima.im 10,237 followers · 1w ·

Why it will be useful for you to attend nima's online quarterly forum on Thursday 27 February 2025 (2pm GMT)

Why you should attend nima's quarterly forum
WeAreNima.im
5 · 4 reposts

Events ([calendar](#))

- nima events
 - Instigated quarterly forums
 - first webinar: **27 May**
 - planning member forums
 - next virtual conference: **6 November 2025**
- external events
 - Focus: Digital Construction Week (**4-5 June**, London)
 - Programme of speaking opportunities at other events throughout the year
 - Volunteer support vital



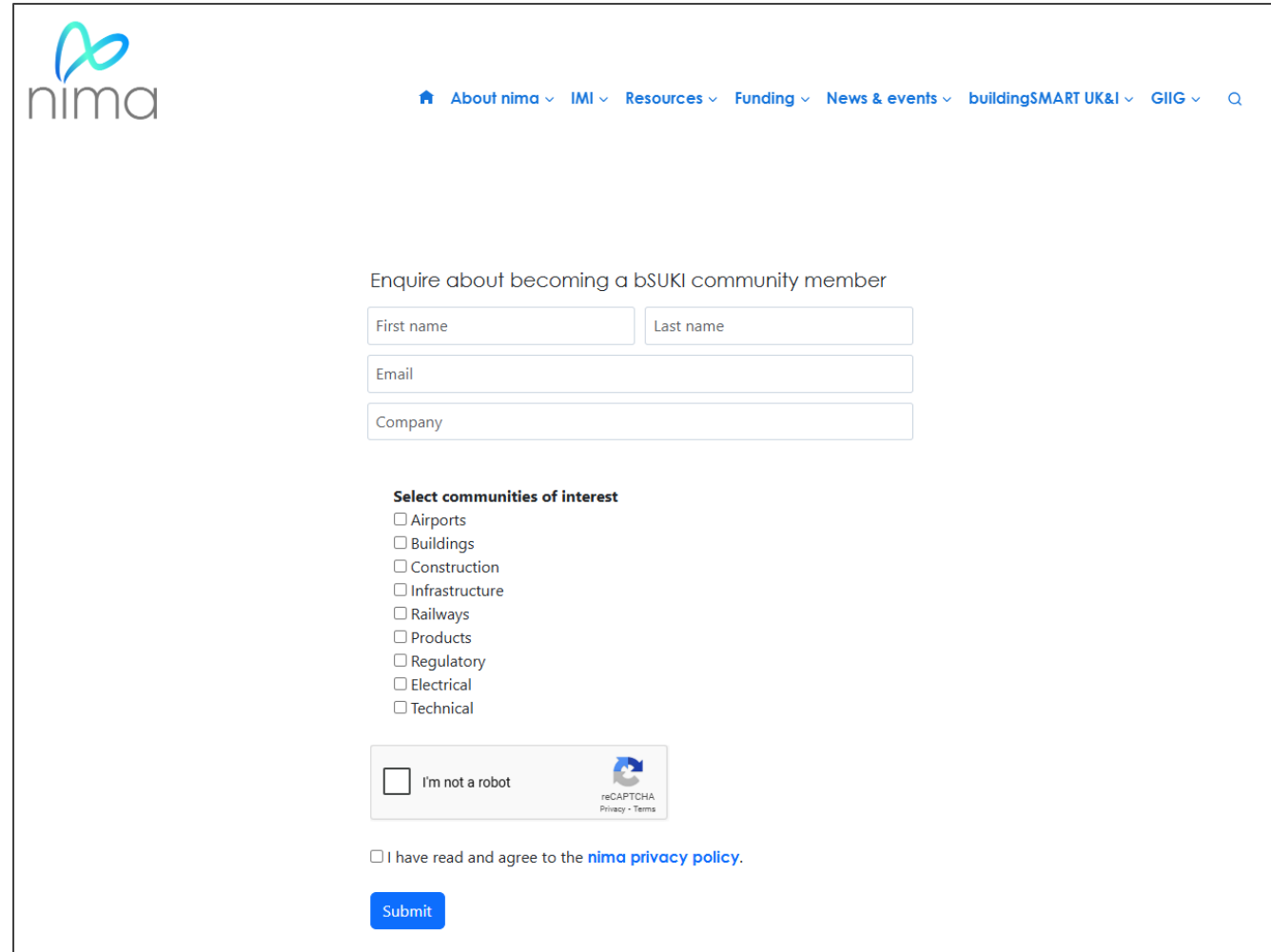
Comms - Q&A

buildingSMART UK & Ireland

Update

nima quarterly forum – 22nd May 2025

Sign up for domain community calls



The screenshot shows the nima website's sign-up form for bsUKI community members. The form includes a navigation menu with links for About nima, IMI, Resources, Funding, News & events, buildingSMART UK&I, and GIG. The main heading is "Enquire about becoming a bsUKI community member". The form fields are: First name, Last name, Email, and Company. Below these is a section titled "Select communities of interest" with checkboxes for Airports, Buildings, Construction, Infrastructure, Railways, Products, Regulatory, Electrical, and Technical. There is also a reCAPTCHA "I'm not a robot" checkbox and a checkbox for "I have read and agree to the nima privacy policy." A blue "Submit" button is at the bottom.



<https://wearenima.im/bsuki-form/>

Submit for the buildingSMART Awards



openBIM
AWARDS 2025

buildingSMART[®]
International

**SUBMISSION
DEADLINE**

31 MAY 2025

The graphic features a dark background with a shimmering gold particle border at the bottom. On the left, a large, semi-transparent, faceted octagonal shape contains the text 'openBIM AWARDS 2025'. On the right, the buildingSMART International logo is positioned above the text 'SUBMISSION DEADLINE', which is underlined, followed by '31 MAY 2025' in a large, bold, white font.

Would you like to join us on the committee?



We need support for the following domains:

- Building
- Railway
- Product
- Electrical
- PCert
- Comms

Contact us at bsuki@wearenima.im

<https://wearenima.im/certification/>

Professional Certification – Foundation

Click the link to find UK&I training providers



bSUKI - Q&A

nima quarterly forum, May 2025



AOB / any other Q&A

Thank you for attending

Save the date ...

Next nima quarterly forum: 4 September 2025
